

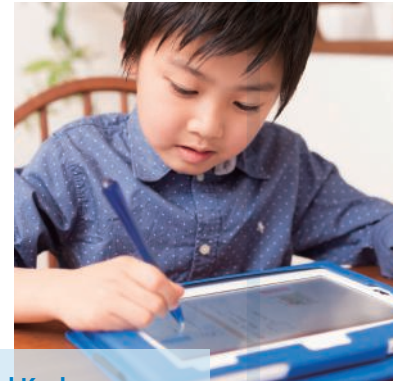
Our ties with people and society, our greatest strength

Since its founding, the Benesse Group has sought to realize well-being for everyone, together with its customers, the community, society, and our team. Over time, we have cultivated positive relationships with people and society. These ties are our greatest assets and the inspiration for us to create the new value that the future demands.

Customers: We will continue to provide broad and deep support to the lives of each one of our customers

Team: We work in union with our dedicated, diverse team

Community & society: We use our knowledge and expertise to repay society



Shinkenzeemi and Kodomo Challenge enrollment in Japan

2.57 million

as of April 2018

With content upgrades coming in 2020, we offer correspondence courses for preschoolers through senior high school students, ages 0–18.

Senior high schools using our products

90%

as of April 2018

Roughly 4,500 Japanese senior high schools use our products, particularly Shinken Simulated Exams. By means of GTEC and Classi, we will be expanding our offered services.



Enrollment in Kodomo Challenge outside Japan

1.27 million*

as of April 2018

Overseas enrollment has reached approximately 1.27 million for our Kodomo Challenge business.

* For China and Taiwan. Excluded are correspondence courses offered in Korea via licensing agreements.



ESL classrooms for young learners

1,700

as of April 2018

With roughly 1,700 schools throughout Japan, BE Studio teaches English to everyone: from babies to junior high schools, as well as businesses and homeschool facilities that previously lacked English schools.



Berlitz's presence worldwide

70 countries & regions

as of end-December 2017

Berlitz teaches languages to everyone, in more than 70 countries and regions around the world.



Red-pen teachers

11,000

as of end-March 2018

About 11,000 Red-pen teachers assist Shinkenzemi enrollees with education tailored to their individual learning needs.



Employees (consolidated)

20,300

as of end-March 2018

A team of 20,387 work at Benesse Group.

Nursing-care staff

9,200

as of end-July 2018

Committed to occupational training, roughly 60% of our 9,232 caregivers are permanent employees and support over 300 nursing homes.



Nursing home residents

16,000

as of end-March 2018

Benesse Style Care provides homes and care for the elderly to ensure a secure, comfortable living environment.



Average monthly circulation

565,000 copies*

October–December, 2017

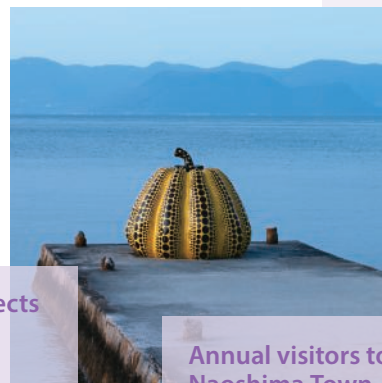
THANK YOU!, Tamago Club, and Hiyoko Club provide unique content to assist mothers and their families in their day-to-day lives.

* Certified number of copies printed, compiled by the Japanese Magazine Publishers Association.



Pumpkin by Yayoi Kusama, exhibited in 1994

© YAYOI KUSAMA

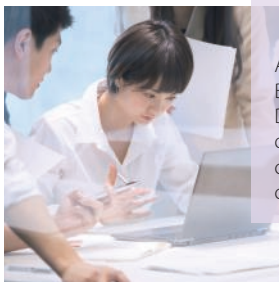


Surveys & research projects

400+

as of April 2018

Available to the general public, The Benesse Education Research and Development Institute has published over 400 surveys and research projects concerning pregnancy, childbirth, child-rearing, and education.



Annual visitors to Naoshima Town

500,000*

in 2017

Through art, together with Fukutake Foundation, the company leverages Benesse Art Site Naoshima to support the Naoshima community.

* Published by the Town-Naoshima Tourism Association